

Mouse Hes1 Antibody (Center)
Purified Rabbit Polyclonal Antibody (Pab)
Catalog # AP20925a**Specification**

Mouse Hes1 Antibody (Center) - Product Information

Application	WB,E
Primary Accession	P35428
Other Accession	Q04666 , Q14469 , Q3ZBG4 , Q8AVU4 , Q6IRB2
Reactivity	Mouse
Predicted	Xenopus, Bovine, Human, Rat
Host	Rabbit
Clonality	Polyclonal
Isotype	Rabbit IgG
Calculated MW	29749

Mouse Hes1 Antibody (Center) - Additional Information**Gene ID** 15205**Other Names**

Transcription factor HES-1, Hairy and enhancer of split 1, Hes1, Hes-1

Target/Specificity

This Mouse Hes1 antibody is generated from a rabbit immunized with a KLH conjugated synthetic peptide between 102-137 amino acids from the Central region of Mouse Hes1.

Dilution

WB~~1:1000

E~~Use at an assay dependent concentration.

Format

Purified polyclonal antibody supplied in PBS with 0.09% (W/V) sodium azide. This antibody is purified through a protein A column, followed by peptide affinity purification.

Storage

Maintain refrigerated at 2-8°C for up to 2 weeks. For long term storage store at -20°C in small aliquots to prevent freeze-thaw cycles.

Precautions

Mouse Hes1 Antibody (Center) is for research use only and not for use in diagnostic or therapeutic procedures.

Mouse Hes1 Antibody (Center) - Protein Information**Name** Hes1**Synonyms** Hes-1

Function Transcriptional repressor of genes that require a bHLH protein for their transcription. May act as a negative regulator of myogenesis by inhibiting the functions of MYOD1 and ASH1 (By similarity). Binds DNA on N-box motifs: 5'-CACNAG-3' with high affinity and on E-box motifs: 5'-CANNTG-3' with low affinity. May play a role in a functional FA core complex response to DNA cross-link damage, being required for the stability and nuclear localization of FA core complex proteins, as well as for FANCD2 monoubiquitination in response to DNA damage (By similarity).

Cellular Location

Nucleus.

Tissue Location

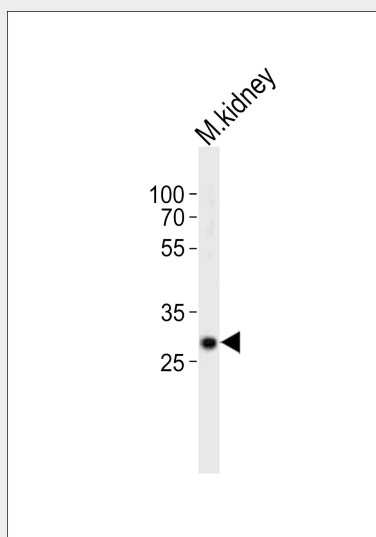
Expressed at high levels in undifferentiated neural precursor cells, but the level of expression decreases as neural differentiation proceeds

Mouse Hes1 Antibody (Center) - Protocols

Provided below are standard protocols that you may find useful for product applications.

- [Western Blot](#)
- [Blocking Peptides](#)
- [Dot Blot](#)
- [Immunohistochemistry](#)
- [Immunofluorescence](#)
- [Immunoprecipitation](#)
- [Flow Cytometry](#)
- [Cell Culture](#)

Mouse Hes1 Antibody (Center) - Images



Western blot analysis of lysate from mouse kidney tissue, using Hes1 Antibody (Center)(Cat. #AP20925a). AP20925a was diluted at 1:1000. A goat anti-rabbit IgG H&L(HRP) at 1:10000 dilution was used as the secondary antibody. Lysate at 20ug.

Mouse Hes1 Antibody (Center) - Background

Transcriptional repressor of genes that require a bHLH protein for their transcription. May act as a negative regulator of myogenesis by inhibiting the functions of MYOD1 and ASH1 (By similarity).

Binds DNA on N-box motifs: 5'-CACNAG-3' with high affinity and on E-box motifs: 5'-CANNTG-3' with low affinity. May play a role in a functional FA core complex response to DNA cross- link damage, being required for the stability and nuclear localization of FA core complex proteins, as well as for FANCD2 monoubiquitination in response to DNA damage (By similarity).

Mouse Hes1 Antibody (Center) - References

Takebayashi K.,et al.J. Biol. Chem. 269:5150-5156(1994).
Grbavec D.,et al.Eur. J. Biochem. 258:339-349(1998).
Bae S.-K.,et al.Development 127:2933-2943(2000).